

# ABC Helpdesk

Knowledgebase > Microsoft > Windows Desktop > Map Network Drive - Windows 7

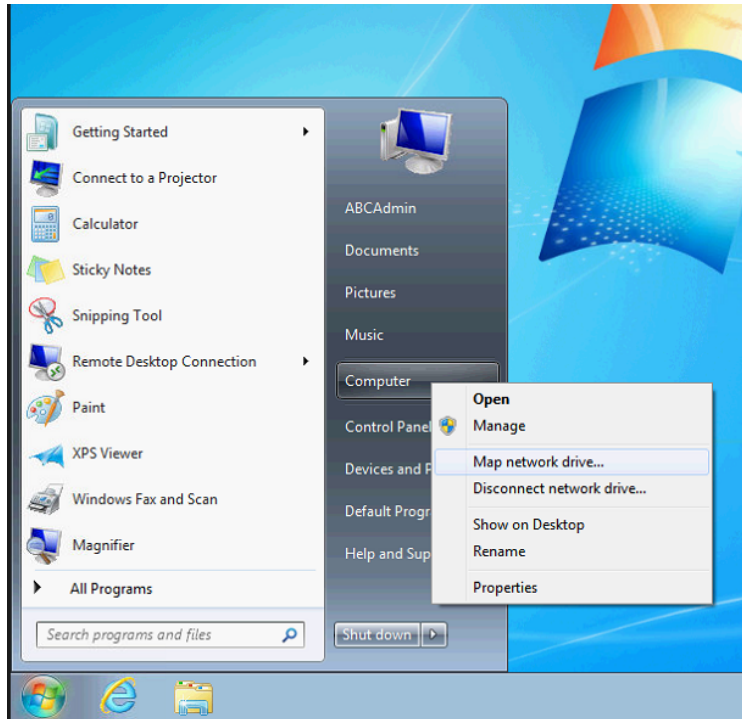
---

## Map Network Drive - Windows 7

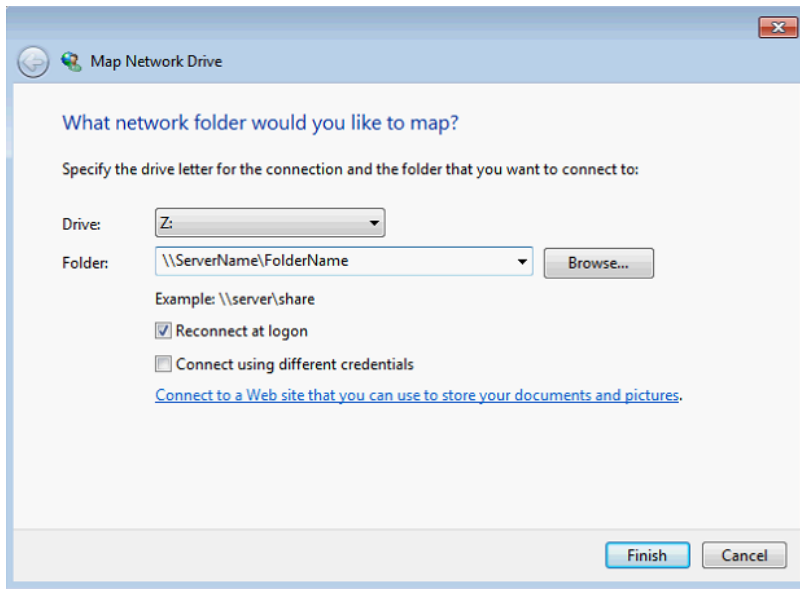
Ali Raeis-Mohammad - 2017-11-21 - Windows Desktop

Map Network Drive - Windows 7

Click the Start icon at the bottom left of the screen, right click Computer and select 'Map Network Drive'



In the pop-up windows select a letter to use from the drop down menu and in the folder enter the path to the folder you want to map. This may have been provided in the email sent to you.



Click the finish button and you should now see the network drive mapped in Explorer.