

ABC Helpdesk

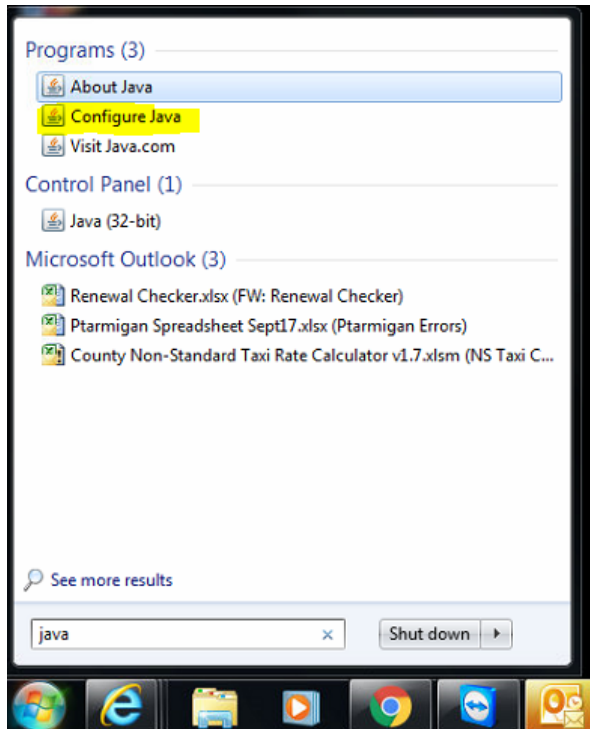
Knowledgebase > General > OpenGI - Install Client

OpenGI - Install Client

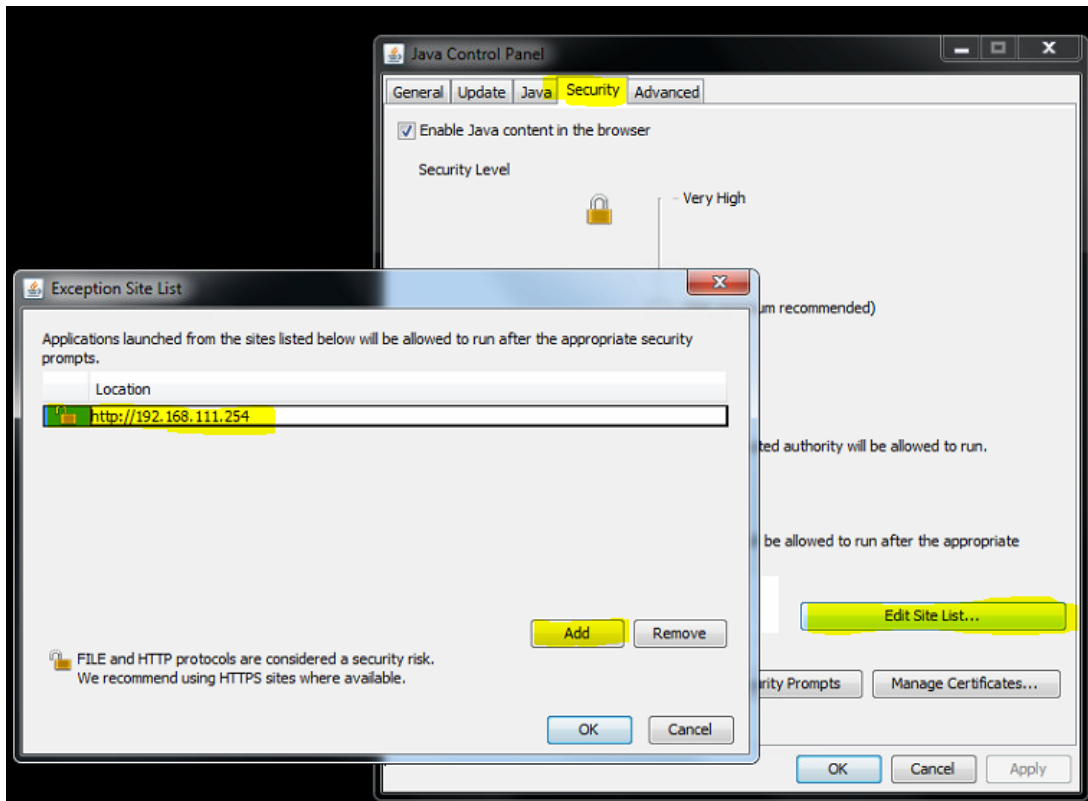
Ali Raeis-Mohammad - 2017-12-11 - General

To install the OpenGI Client please complete the instructions below.

Click Start and type "java" in the search field. In the results you should see "Configure Java"



Click the Security tab followed by the Edit Site List button. In the new popup windows click Add, and enter the address <http://192.168.111.254>



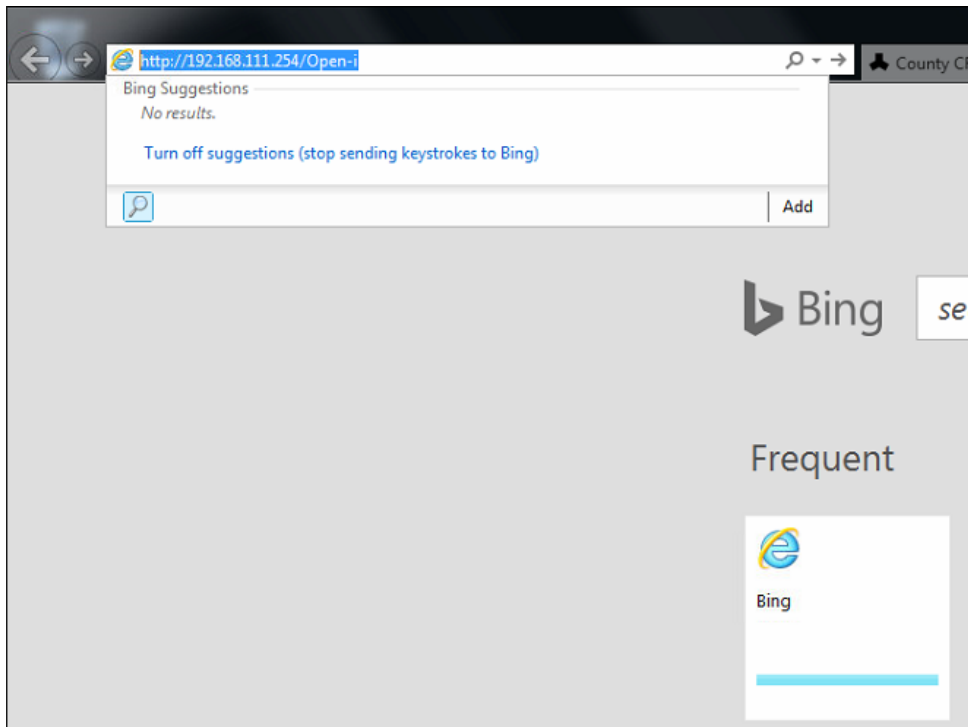
Click OK, Continue, and OK.

Open Internet Explorer, the icon is below.

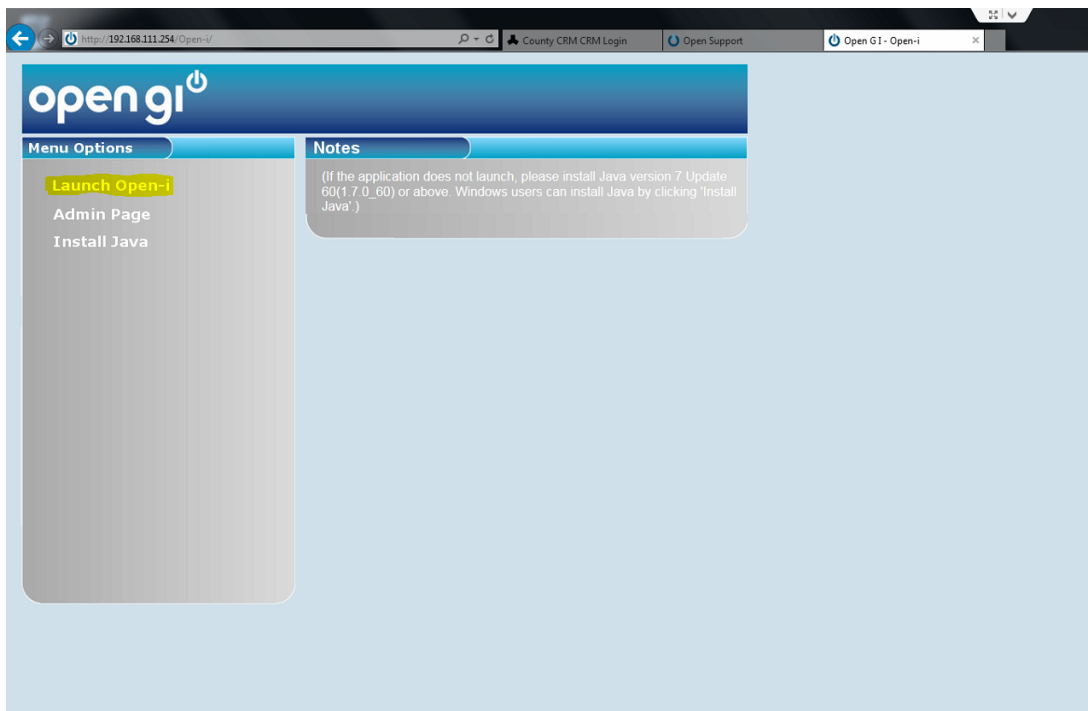


In the top address bar delete what is in there and type the following address, please note that this address is case sensitive.

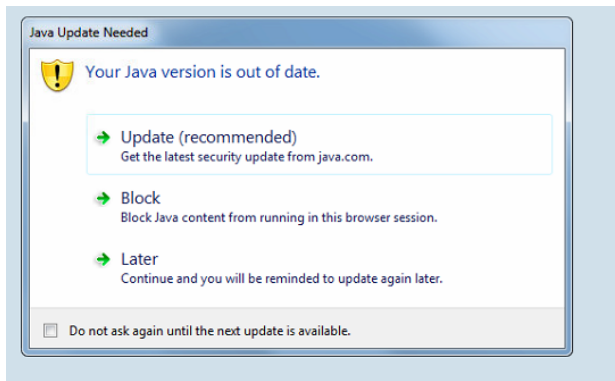
http://192.168.111.254/Open-i



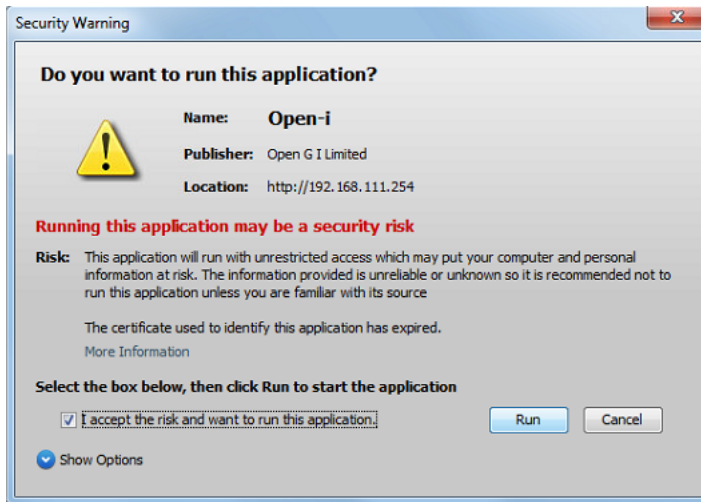
The page below should load and you should click Launch Open-i



You may be presented with the following screen, click "Later". If you do not see this screen proceed to the next step.



On the security warning click the check box "I accept the risk..." and click Run.



Following this you should see the screen below and the setup is complete.

